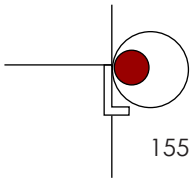
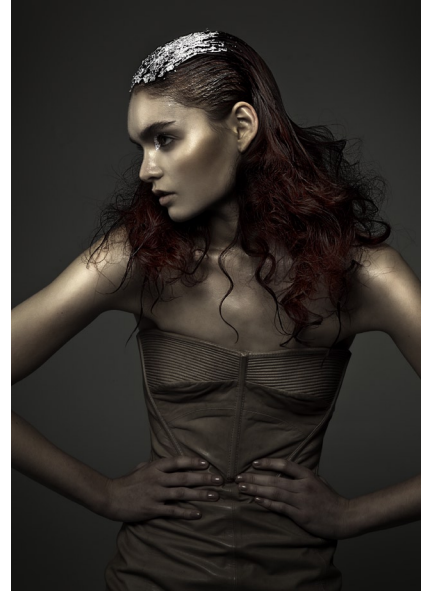


ELECTRUM

BARNEY GLEESON



LEE PRESTON HAIRDRESSING

155 ANGELO STREET, SOUTH PERTH. WA. 6151.

PH: +61 8 9367 3668

contact@leeprestonhair.com

www.leeprestonhair.com



Barney Gleeson began his career in hairdressing in 1994 at Melbourne's **Strugnell Cole**. After 4 years with the salon, Barney left the salon floor to explore the world of fashion, starting the freelance business **[k]** in 1999. In partnership with makeup artist Anna Timou, Barney took this time to refine his skills in session styling and, later, post-production imaging. Working within Melbourne's fringe fashion, music and film industries, **[k]** was beginning to establish when the partnership dissolved in 2000.

In 2001, Barney joined Melbourne's **shibui** salon in their cutting department. During the three years at shibui, Barney headed shibui's online department, re-designing the shibui website and acting as personal assistant to hair gurus, Rob Hastie, Dean Holcombe and Tracey Colebrook. During this period, Barney assisted the production of **shibui's 'picture this... twenty years shibui melbourne'** book, a retrospective of shibui work.

In 2004, Barney moved west and settled in Perth, joining **Lee Preston Hairdressing** in September of that year. Since joining the team, Barney has been an active member of the salon's Artistic Team, working with the team in fashion parades, educational tours and collection campaigns. In 2007, Barney moved into his new role within the salon as the **Manager of Marketing and Promotions** and is now responsible for overseeing the creation and maintenance of the Lee Preston Hairdressing 'brand'.

In 2008, Barney went from strength to strength. Having received the prestigious **AHFA WA /NT Hairdresser of the Year 2008**, Barney's winning

collection was then announced as a finalist in the **AIPP Awards 2008/2009 'Best Commercial Collection'** category. He also received the honour of **Stylist of the Month (Sept. 2008)** on myhairdressersearch.com.

In 2009, Barney was announced as a **Finalist in the AHFA WA/ NT Hairdresser of the Year 2009**. His contribution to hair industry has seen him writing feature articles on business related topics for **AHJ** and he joined the **Goldwell Education Team** as a Guest artist. Featured heavily in consumer magazines, Barney was picked up by both **Harper's Bazaar** and **Grazia** as one of Australia's leading stylists.

2010 was a busy year. Featured once more in **Harper's Bazaar**, and gracing the **cover of HJI**, Barney's work continued to impress both the national and international industry. Joining the **KMS Education Team** in 2010, he was announced as the **winner of the KMS Session Stylist Search 2010**, and has since travelled extensively to work closely with KMS Global on education programs. Winner of **2011 AHFA 'WA Hairdresser of the Year'** and finalist for **2011 AHFA 'Mens Hairdresser of the Year'** and **2011/2012 AIPP 'Best Photographic Collection'**, Barney is fast becoming a rising force in the International hairdressing industry.

INSPIRATION

ELECTRUM

{ih-lect-truhm} n. a naturally occurring alloy of silver and gold.

The 'Electrum' Collection is the evolution of many ideas and is unlike any collection I have done in the past. I really wanted to push myself into a new direction with this collection... blurring the lines between wearable, editorial and avant guard hair. As with most of my work, texture is a key element in the collection. With 'Electrum' I really wanted to explore the combination of components... control, flyaway and raw textures.

There is a strength in the femininity of the images as I wanted to portray warrior like characters in the collection. Whilst the femininity is undeniable, there is a heroic nature present. This can be seen in the shapes and styles created for the collection. There is a ceremonial element; alluding to helmets and headpieces. Like many historical figures, the characters in 'Electrum' are modern Amazon warriors... both strong and true.

The gold and silver leafing used in the collection adds to this idea, exploring hair as an adornment. Slicking sections to tighten shapes allows the texture, wind and movement to tell the story. Braided and roped detail were used to contain and shape the skull, gilded with leaf to add a reflective component.

I wanted to keep the styling and makeup very simple. The gilding was used on a natural base to emphasise the technique in the hair. Leather and sheer fabrics were used to give form and strength to the body. Like an armour, the styling hugs the female form.



ELECTRUM

Hair: Barney Gleeson
Colour: Jess Panizza
Styling: Jodee Knowles
Makeup: Hendra
Photography: Meiji Nguyen